

Maphumulo Local Municipality

Context Plan



uMshwathi LM

Umvoti LM

uMlalazi LM

Mandeni LM

District Municipality

Local Municipality

Railway line

National Road

Provincial Road

Minor Road Network

Landcover (SAC 2005)

Cultivated: permanent

Cultivated: temporary

Thicket & bushland (etc)

Degraded: thicket & bushland

Unimproved grassland

Degraded: unimproved grassland

Shrubland and low Fynbos

Improved grassland

Forest

Forest plantations

Commercial

Industrial / Transport

Urban / built-up land

Waterbodies

Wetlands

Barren rock

1 0 1 2 3 4 5 Kilometers



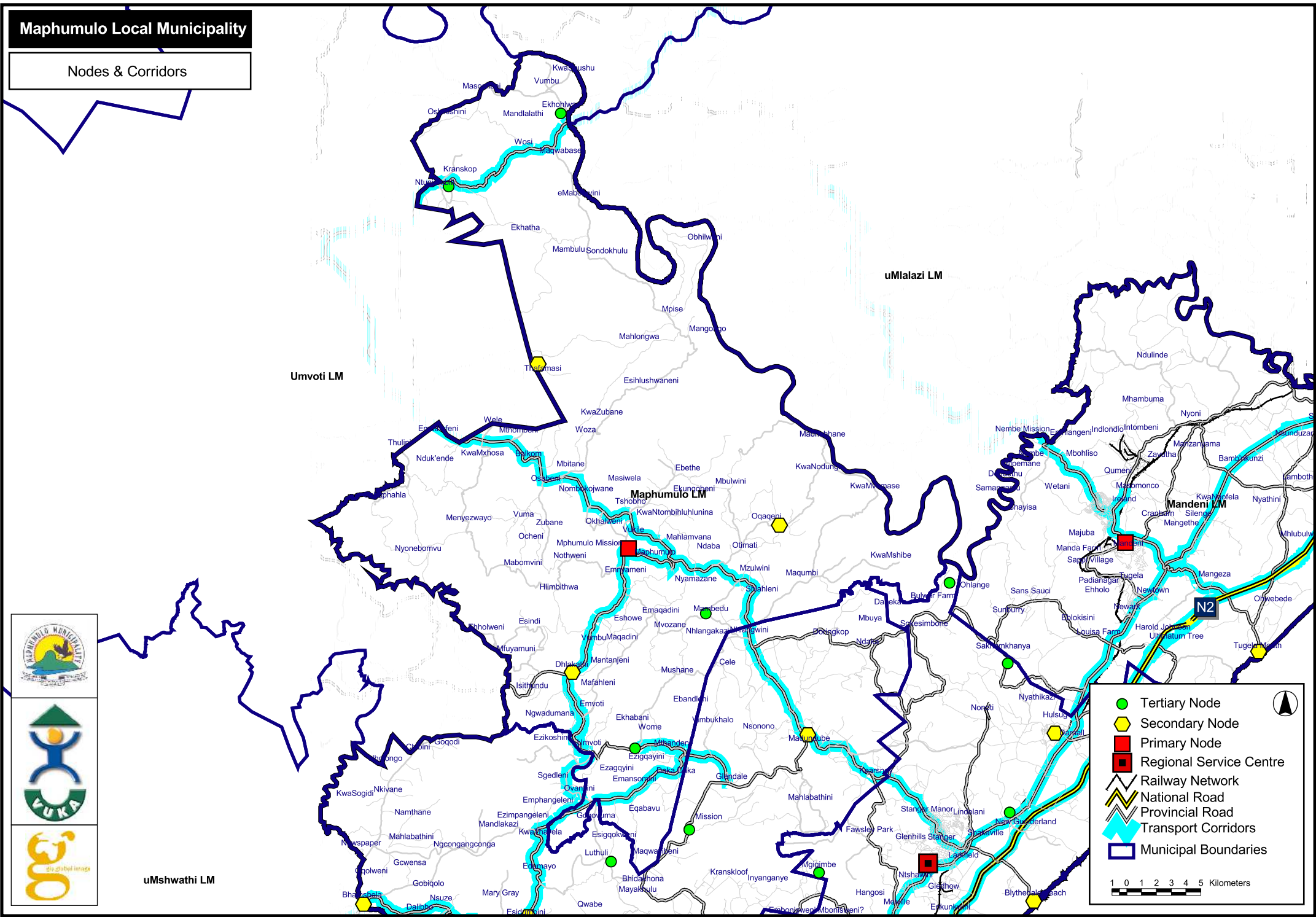
Tribal Areas



-  Municipal Boundary
-  Tribal Authority Areas
-  Development Nodes
-  Maphumulo Village

Maphumulo Local Municipality

Nodes & Corridors

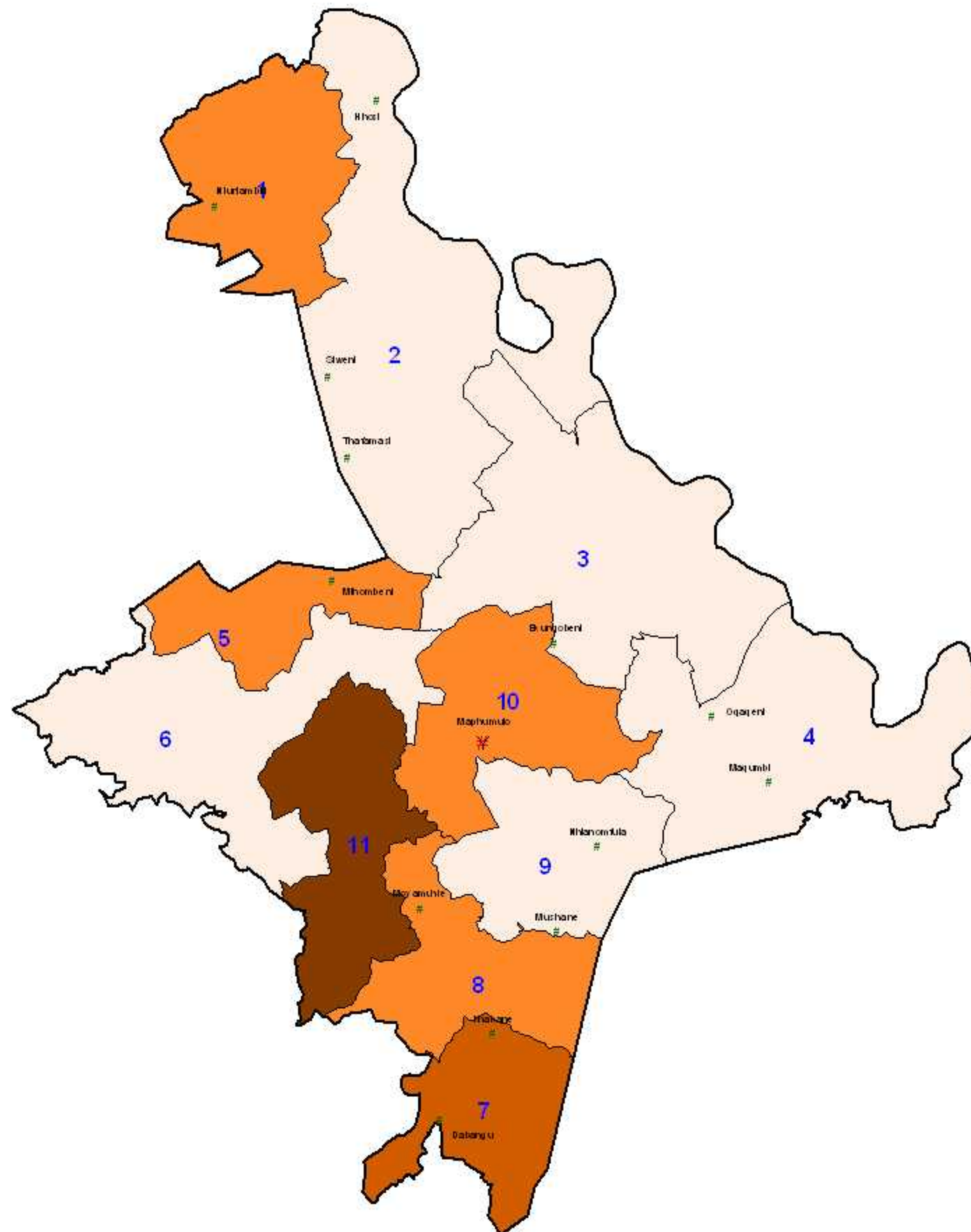
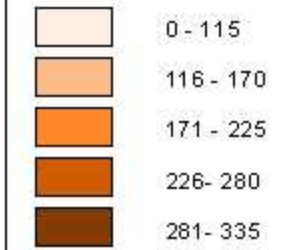




Population Density
(As Per Census Data)

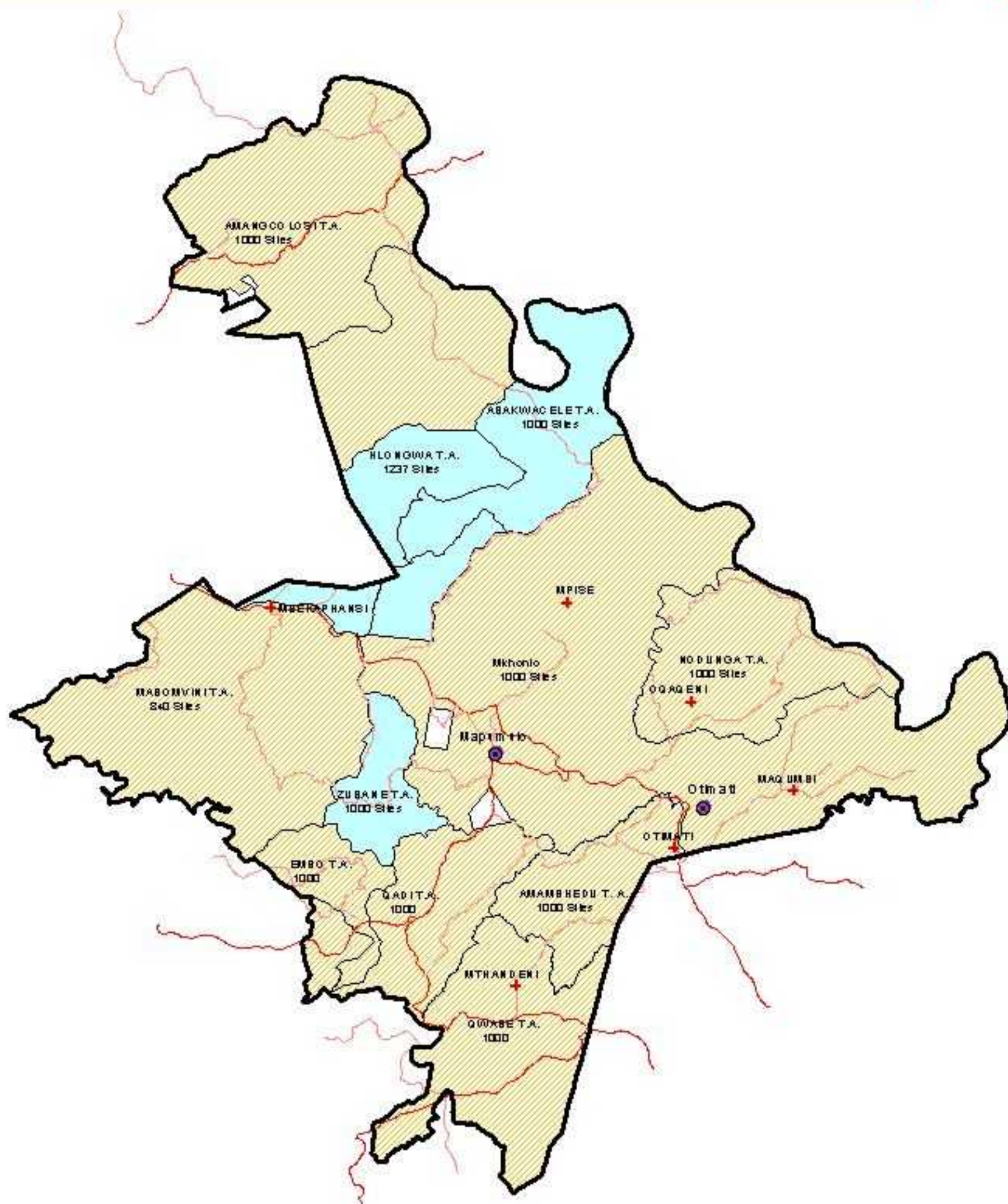
 Municipal Boundary

Population Density
(People Per Square Kilometer)





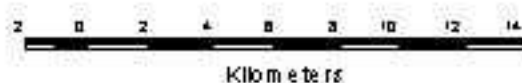
MAPHUMULO MUNICIPALITY'S HOUSING PROJECTS



Date Compiled: 10/12/2007

Reference: MHP/07

Scale: 1: 300 000



Legend

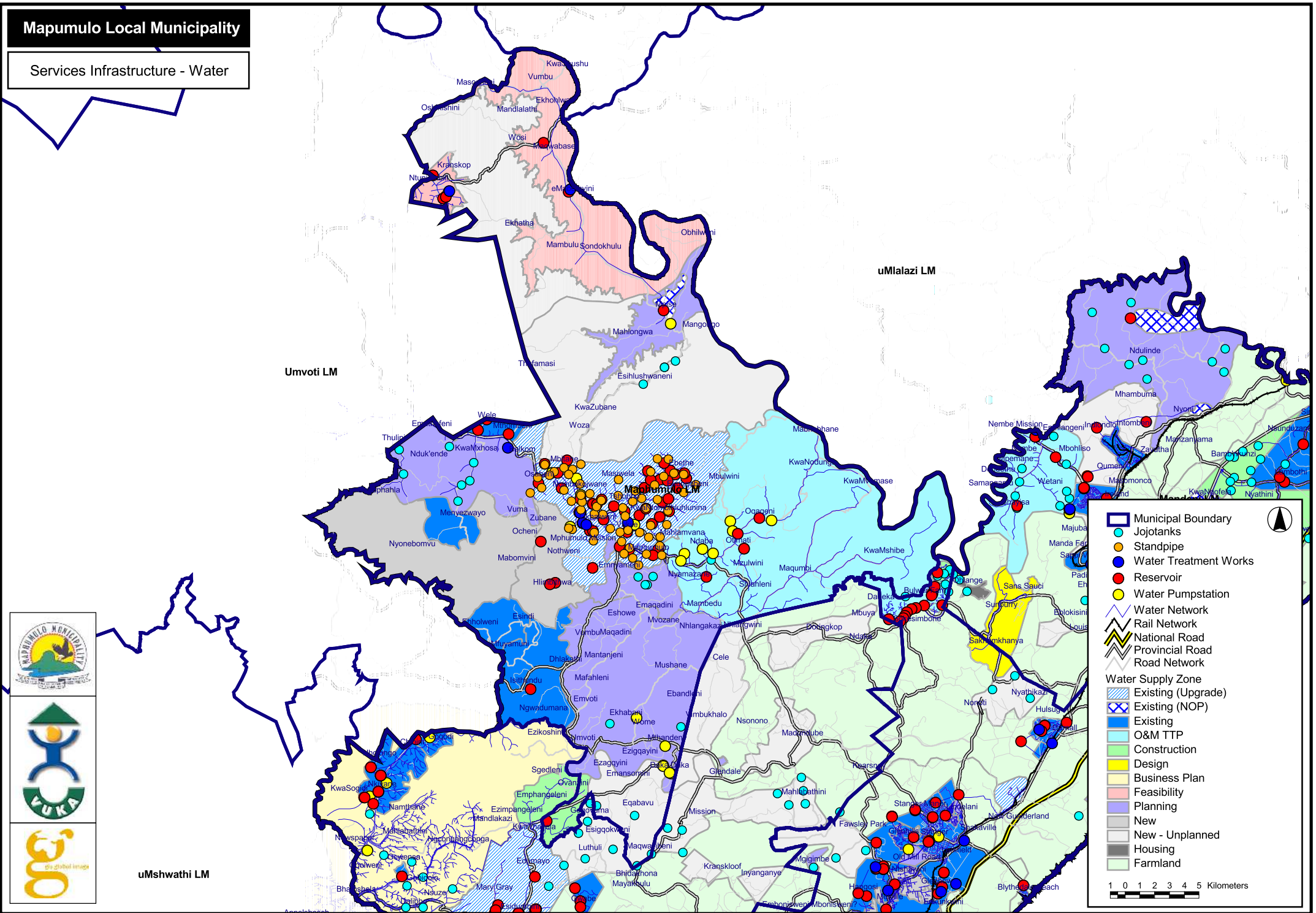
- + Clinics
- Place names
- District Roads
- Provincial Roads
- Planned Projects
- Current Projects
- Municipal Boundary



iGugu GIS
44 Roland Gardens
346 Roland Chapman Drive
Montclair
Tel: 031- 4621600
Cell: 084 9191330

Mapumulo Local Municipality

Services Infrastructure - Water



Maphumulo Local Municipality

Services Infrastructure - Sanitation

