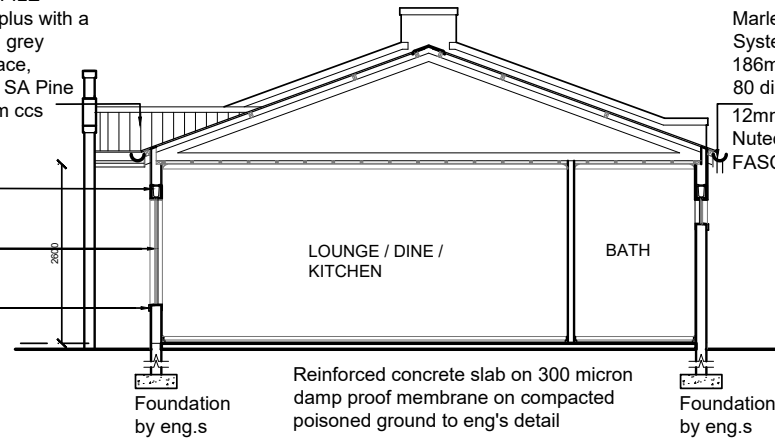


Global Roofings 0.55mm thick  
CORRAGATED 10.5 PROFILE  
Zincal AZ150 G550 colourplus with a  
standard colour and a cool grey  
backing coat to the other face,  
on 50mm x 76mm treated SA Pine  
PURLINS @ max. 1800mm ccs

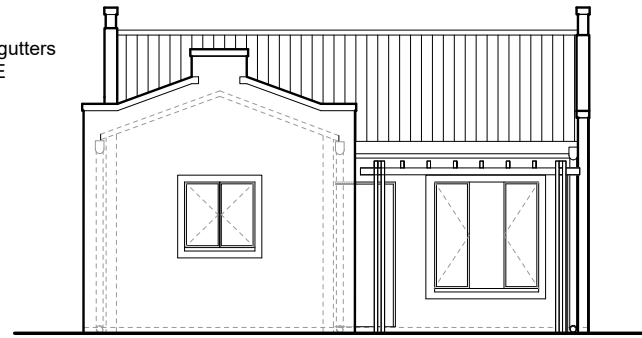
150mm x 190mm  
high U-block lintol  
steel window as per  
schedule  
plastered  
window sill



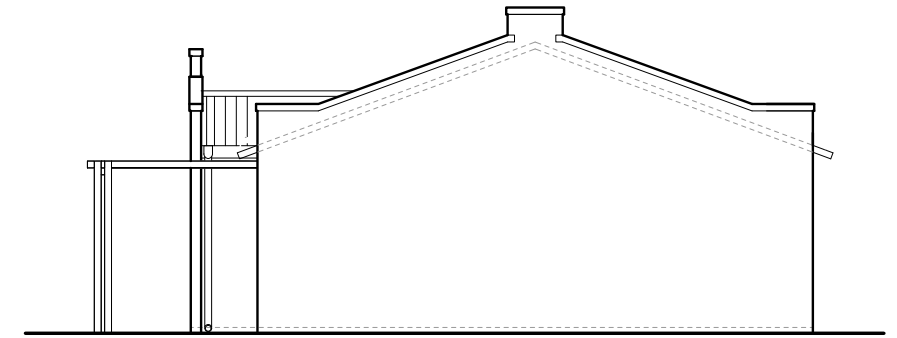
**SECTION A-A**  
scale 1:100

Marley Vynadeep  
System with  
186mm half round gutters  
80 dia DOWNPIPE  
12mm x 225mm  
Nutec cement  
FASCIA BOARD

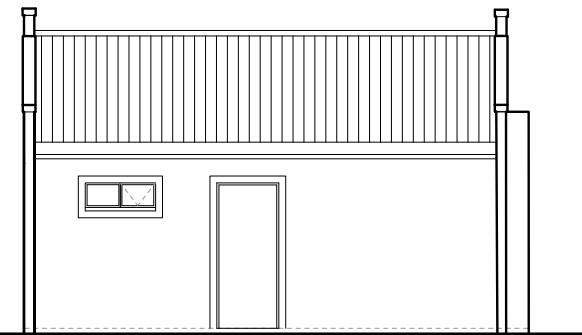
Reinforced concrete slab on 300 micron  
damp proof membrane on compacted  
poisoned ground to eng's detail



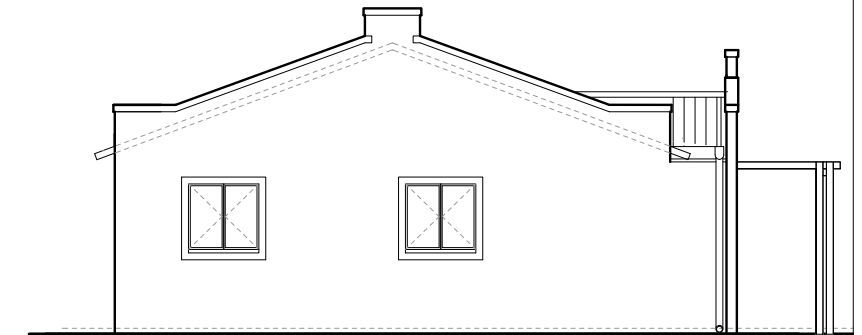
**VIEW 1**  
scale 1:100



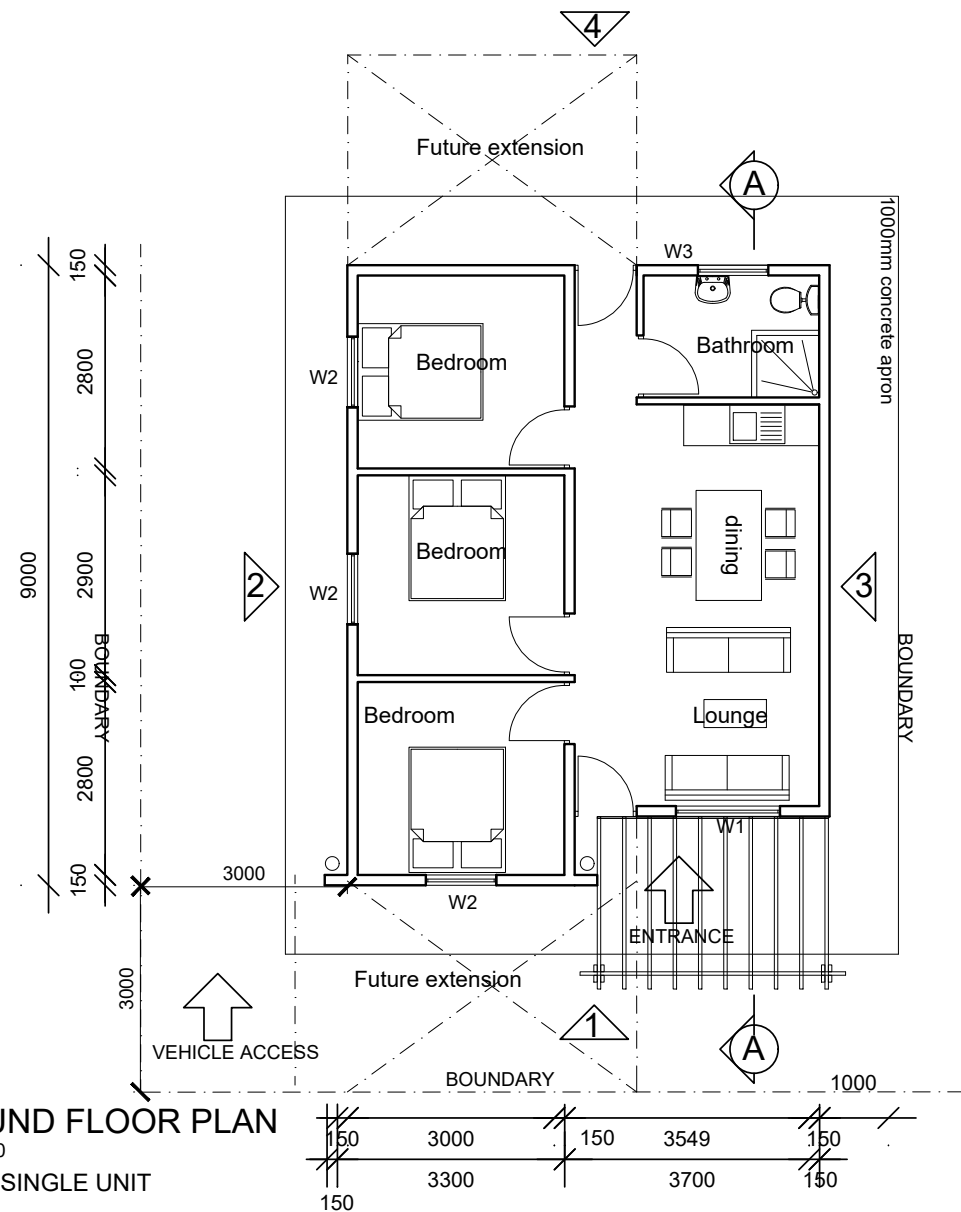
**VIEW 3**  
scale 1:100



**VIEW 4**  
Scale 1:100



**VIEW 2**  
Scale 1:100



**GROUND FLOOR PLAN**  
scale 1:100  
60SQM SINGLE UNIT

**UNIT TYPE 2**  
Single unit  
Narrow Site  
Front & Rear Future ext.  
See drawing 2R for perspectives dwgs.

PROJECT <b>AFFORDABLE HOUSING</b>		ARCHITECT <b>ARTEK 4 ARCHITECTS (KZN) CC</b>	
DRAWING DESCRIPTION <b>60 Sqm SINGLE UNIT OPTION 1 PLAN ,SECTION &amp; ELEVATIONS</b>		Durban: 46 Lena Ahrens Road, Glenwood, Durban 4000 tel: 031 201 0445 fax: 031 201 6609 email: admin@artek4.co.za Port Shepstone: 19 Tradewinds, Marine Drive, Shelly Beach tel: 039 682 2447 fax: 039 682 2446 email: adminps@artek4.co.za	
Scale 1:100 1:50	Date 2017.12.06	Drawn MC	Project No. 1705
			Drawing No. <b>2</b>
			Rev. .

