



KWAZULU-NATAL PROVINCE

HUMAN SETTLEMENTS
REPUBLIC OF SOUTH AFRICA

Policy Communiqué

Circular No. 3/2022

Date : 05 August 2022



INDEX

| | |
|---|---|
| ENHANCEMENTS TO THE REVISED MATERIAL SUPPLY POLICY | 3 |
| SURVEY: CLIMATE CHANGE RISK AT KWAZULU-NATAL MUNICIPALITIES | 6 |

ENHANCEMENTS TO THE REVISED MATERIAL SUPPLY POLICY

The Enhancements to the Revised Material Supply Policy was approved by the MEC on 5 June 2022. It seeks to address the gaps identified by the office of the Auditor General by providing a Standard Operating Procedure for material supply in respect of formal and informal structures. Furthermore, the policy seeks to align the catalogue of materials for informal and formal structures to the current maximum allowable cost of material supply as well as to the current adjustment of the housing subsidy quantum for the year 2022/23. The enhancements to the Revised Material Supply Policy have been introduced to address the identified gaps to enable the Department to undertake the supply of material in a transparent and auditable manner to beneficiaries in need. The process provides control and verification measures to mitigate the risks associated with this instrument.

In an effort to establish an auditable process in terms of which the Department will undertake the supply of material to beneficiaries when required, a Standard Operating Procedure as per the flow diagram below has been compiled to map the process that will be adopted to ensure that the following areas of concern are adequately addressed:

- a) The process of identifying beneficiaries: affected beneficiaries of different disaster situations will be identified through the Municipality, Office of the MEC, War-rooms and other reliable or recognized social media sources. **Details or a list of the affected beneficiary/ies** is required to be submitted to the Department.
- b) The method used to identify the actual goods/materials needed will be determined through a physical verification by the Department's works inspectors, of the personal details and place of residence of the affected beneficiary/ies against the details/list provided. An assessment is conducted by the inspector of the affected structure/house and a **Damage Assessment Report** is completed with photographic proof thereof.
- c) The determination of whether the structure requires to be repaired or rebuilt will be based on the assessment undertaken by the Department's Works Inspector. A list of the required materials will be compiled by the inspector. The list of materials to be supplied and cost limit will be informed by **the Catalogue of Material** for informal and formal structures and must not exceed the prescribed quantities.
- d) The confirmation of the delivery and receipt of the materials to the respective beneficiaries will be undertaken by the Department's Project Management officials. The beneficiary will receive materials on delivery and sign an **Acknowledgement of Receipt of Material form**.

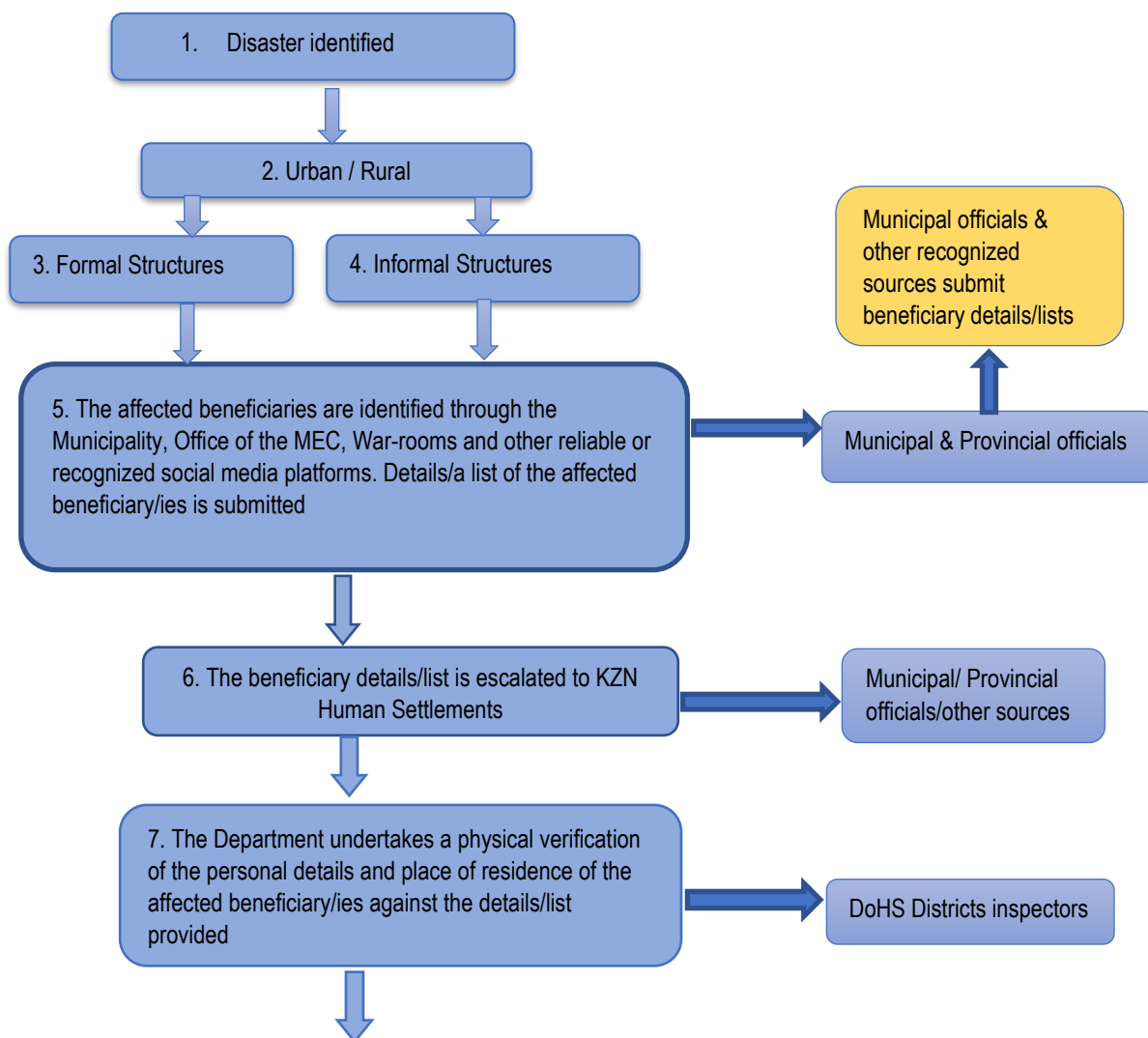
FINANCIAL IMPLICATIONS

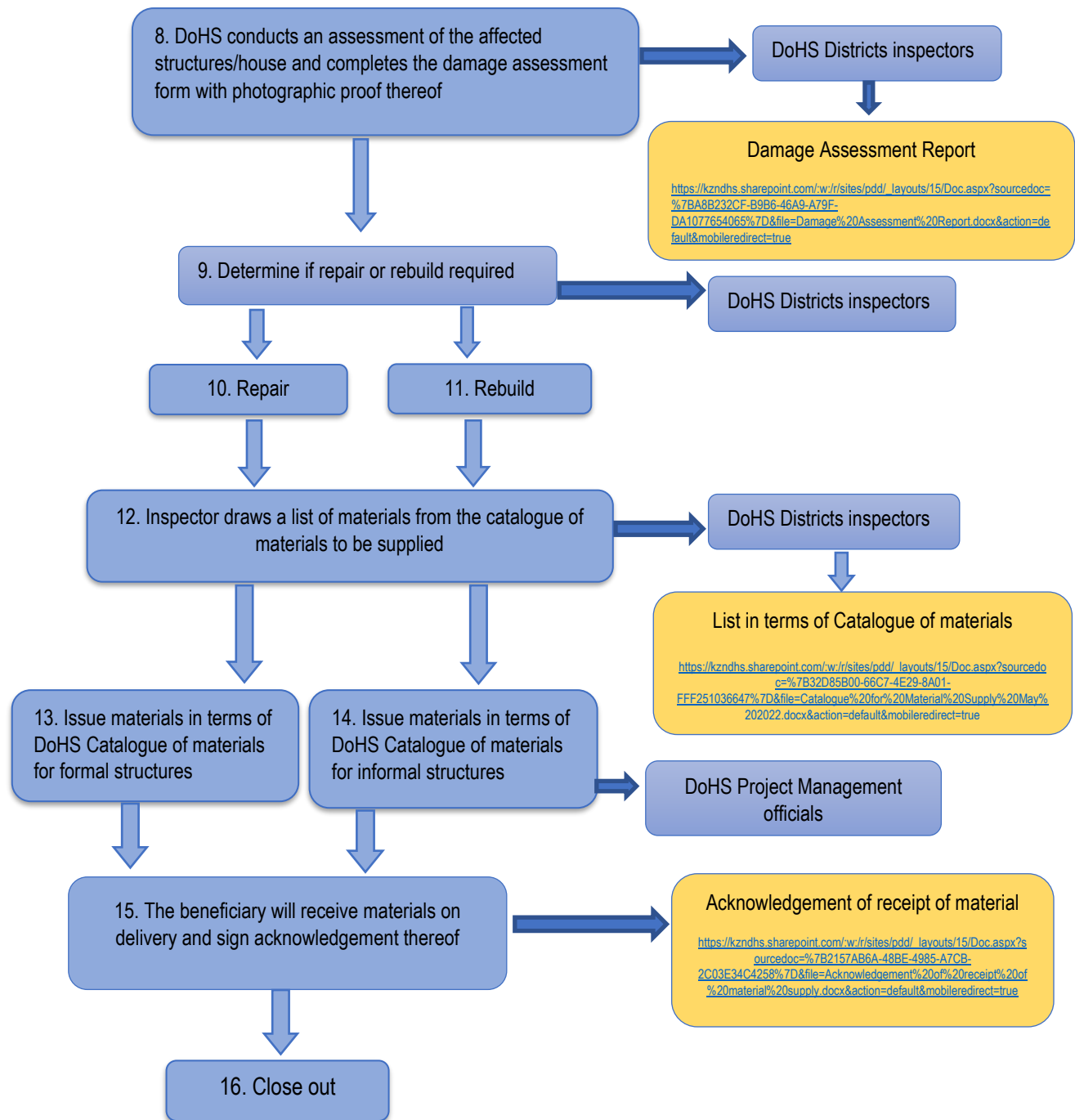
The current maximum allowable cost of materials for informal structures in terms of the catalogue of materials is **R13 019.17 including VAT** based on the current cost determined by the municipalities in May 2022. The cost of material supply for a formal structure that

requires to be rebuilt or reconstructed is limited to the current prevailing Emergency Housing Assistance subsidy quantum of R140 085.00 for 2022/23 for repair or replacement of houses. Any future escalation in the costs must be aligned to the Bureau of Economic Research Building Cost Index (BER-BCI) and must not exceed the prevailing subsidy quantum for repair/reconstruction as approved by the National Minister for the Emergency Assistance Programme.

Delivery costs for the materials must be determined based on the current Policy to cater for the Location of the Development Site. Should there be no suppliers within the 20km radius, proof thereof must be provided, and the Variation calculator must be used to determine the delivery cost payable.

FLOW DIAGRAM OF STANDARD OPERATING PROCEDURE FOR MATERIAL SUPPLY DURING DISASTERS





SURVEY

CLIMATE CHANGE RISK AT KWAZULU-NATAL MUNICIPALITIES

Climate change is already a measurable reality posing significant social, economic, and environmental risks and challenges globally. Like many other developing countries, South Africa is especially vulnerable to the impacts of climate change. Over the past few years, KwaZulu-Natal has experienced extreme changes in weather events causing flooding and droughts in different parts of the province. This has affected the supply of natural resources and increased vulnerability and risks to poor and impoverished communities.

The KZN Department of Human Settlements has over the years become increasingly involved in improving institutional processes to cater for climate change and its impacts on human settlements as well as improve the Department's overall environmental responsibility as a government organization. The Department is part of the KZN Climate Change Strategy administered by the Department of Economic Development, Tourism and Environmental Affairs (EDTEA).

The KZN Department of Human Settlements is undertaking a survey exercise which is intended to monitor the impacts of climate change in the human settlements environment within KZN municipalities and to identify the mitigation and adaptation measures implemented by the municipality as a result. The survey is also intended to monitor the implementation of policies and identify research undertaken, as well as challenges experienced within the municipality.

The outcome of the survey will assist the KZN Department of Human Settlements to assess the overall impact of climate change within KwaZulu-Natal, determine best practices, and assist in the development of innovative solutions to mitigate and adapt to a changing climate.

All municipalities are encouraged to participate in the survey. Please click on the link below to submit your response:

https://forms.office.com/Pages/ResponsePage.aspx?id=h1L26EoM6ESHWoZ_72DTAmL8SbDiGyNPmuXHo-FQ6g1UODZWWEM3VUpDRzREVkg0QUJIVTNXN01ITi4u

The detailed Policy, Guidelines and Procedures may be accessed on the Department's website using the following link:
<https://www.kzndhs.gov.za/index.php/features/policy-documents/provincial-policies>